

# ActualVCE

- ✓ 24/7 customer support, Secure shopping site
- ✓ Free One year updates to match real exam scenarios
- ✓ If you failed your exam after buying our products we will refund the full amount back to you.

[Download Demo](#)



**ONLINE TEST ENGINE**  
Online  
Best Practice Material

- ✓ Online Tool, Convenient, easy to study.
- ✓ Instant Online Access
- ✓ Supports All Web Browsers
- ✓ Practice Online Anytime
- ✓ Test History and Performance Review
- ✓ Supports Windows / Mac / Android / iOS, etc.



**DESKTOP TEST ENGINE**  
Soft  
Best Practice Material

- ✓ Installable Software Application
- ✓ Simulates Real Exam Environment
- ✓ Builds Exam Confidence
- ✓ Supports MS Operating System
- ✓ Two Modes For Practice
- ✓ Practice Offline Anytime



**PRACTICE PDF**  
PDF  
Best Practice Material

- ✓ Printable PDF Format
- ✓ Prepared by IT Experts
- ✓ Instant Access to Download
- ✓ Study Anywhere, Anytime
- ✓ 365 Days Free Updates
- ✓ Free PDF Demo Available



## Security & Privacy

ActualVCE respect customer privacy. We use McAfee's security service to provide you with utmost security for your personal information & peace of mind.



## Instant Download

After Payment, our system will send you the products you purchase in mailbox in a minute after payment. If not received within 2 hours, please contact ActualVCE.



## 365 Days Free Updates

Free update is available within 365 days after your purchase. After 365 days, you will get 50% discounts for updating.



## Try Before Buy

ActualVCE offers free demo of each product. You can check out the interface, question quality and usability of our practice exams before you decide to buy.

<http://www.actualvce.com/>

Believable Exam Dumps Questions grant you ensured success by your first attempt - ActualVCE

**Exam** : **070-688**

**Title** : **Managing and Maintaining  
Windows 8**

**Vendor** : **Microsoft**

**Version** : **DEMO**

NO.1 You administer laptops that run Windows 8 Enterprise and are members of an Active Directory domain.

Users travel frequently and access domain resources from inside client networks or from their home network. You want to manage the laptops when they are connected to the company network from the external networks.

You need to ensure that the laptops can be managed and maintained while users are not logged on to the computers.

Which of the following should you recommend?

- A. Remote Assistance
- B. Windows Remote Management (WinRM)
- C. DirectAccess
- D. Remote Desktop

**Answer:** C

NO.2 Your network contains an Active Directory domain. The domain contains Windows 8.1 Enterprise client computers.

Users frequently use USB drives to store sensitive files that are used on multiple computers.

Your corporate security policy states that all removable storage devices, such as USB data drives, must be encrypted.

You need to ensure that if a user forgets the password for a USB disk that is encrypted by using BitLocker To Go, the user can resolve the issue themselves.

What should you do?

- A. Implement the BitLocker Network Unlock feature.
- B. Publish a data recovery agent certificate by using a Group Policy object (GPO).
- C. For each computer, create a USB startup key.
- D. Instruct the user to open BitLocker Drive Encryption, select Back up recovery key, and then select Save to a file.

**Answer:** B

NO.3 You administer laptops that run Windows 8 Enterprise. The laptops are members of an Active Directory domain and are configured with IPv6 disabled.

Some users require access to the internal company database servers while traveling. You need to configure the requested network connection to the database servers.

What should you configure on the laptops?

- A. A DirectAccess connection to the company network
- B. A virtual private network (VPN) connection to the company network
- C. A metered network connection
- D. Out of band management

**Answer:** B

NO.4 Your network contains an Active Directory domain named contoso.com.

A user receives the following error message when attempting to sign in to a computer: "The trust relationship between this workstation and the primary domain failed."

You need to ensure that the user can sign in to the computer by using a domain user account.

Which tool should you use?

- A. Netcfg
- B. Netsh
- C. Netdom
- D. Netstat

**Answer:** C

NO.5 You have client computers that run Windows 8 Pro.

You need to recommend a solution to roll back the Windows Defender engine and the malware signature files on the computers. The solution must minimize administrative effort.

What should you include in the recommendation?

- A. File History
- B. the Program and Features Control Panel item
- C. Windows 7 File Recovery
- D. System Restore points

**Answer:** D

NO.6 Your company recently purchased 10 new desktop computers for a remote unconnected location. All of the desktop computers have the same hardware configuration.

You install Windows 8 Pro on a reference computer and install a custom driver to support the video adapter.

You want to create an image of the reference desktop that retains the custom driver in the image.

You need to edit the unattended answer file.

Which setting in the unattended answer file should you edit?

- A. Microsoft-Windows-PnPSystemprep | PersistAllDeviceInstalls
- B. Microsoft-Windows-PnPSystemprep | DoNotCleanUpNonPresentDevices
- C. Microsoft-Windows-PnpCustomizationNonWinPE | DriverPaths
- D. Microsoft-Windows-Shell-Setup | OEMInformation

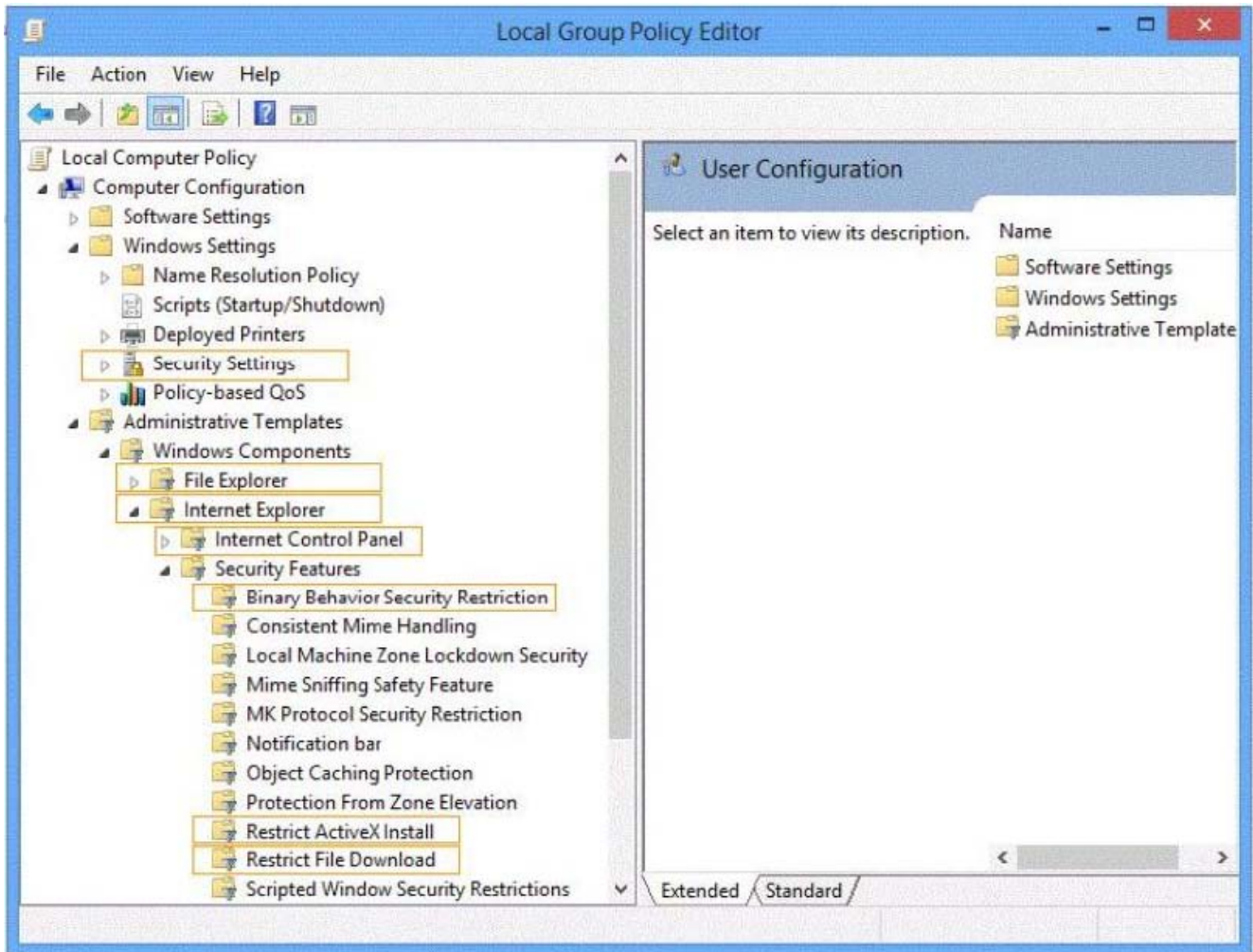
**Answer:** A

NO.7 HOTSPOT

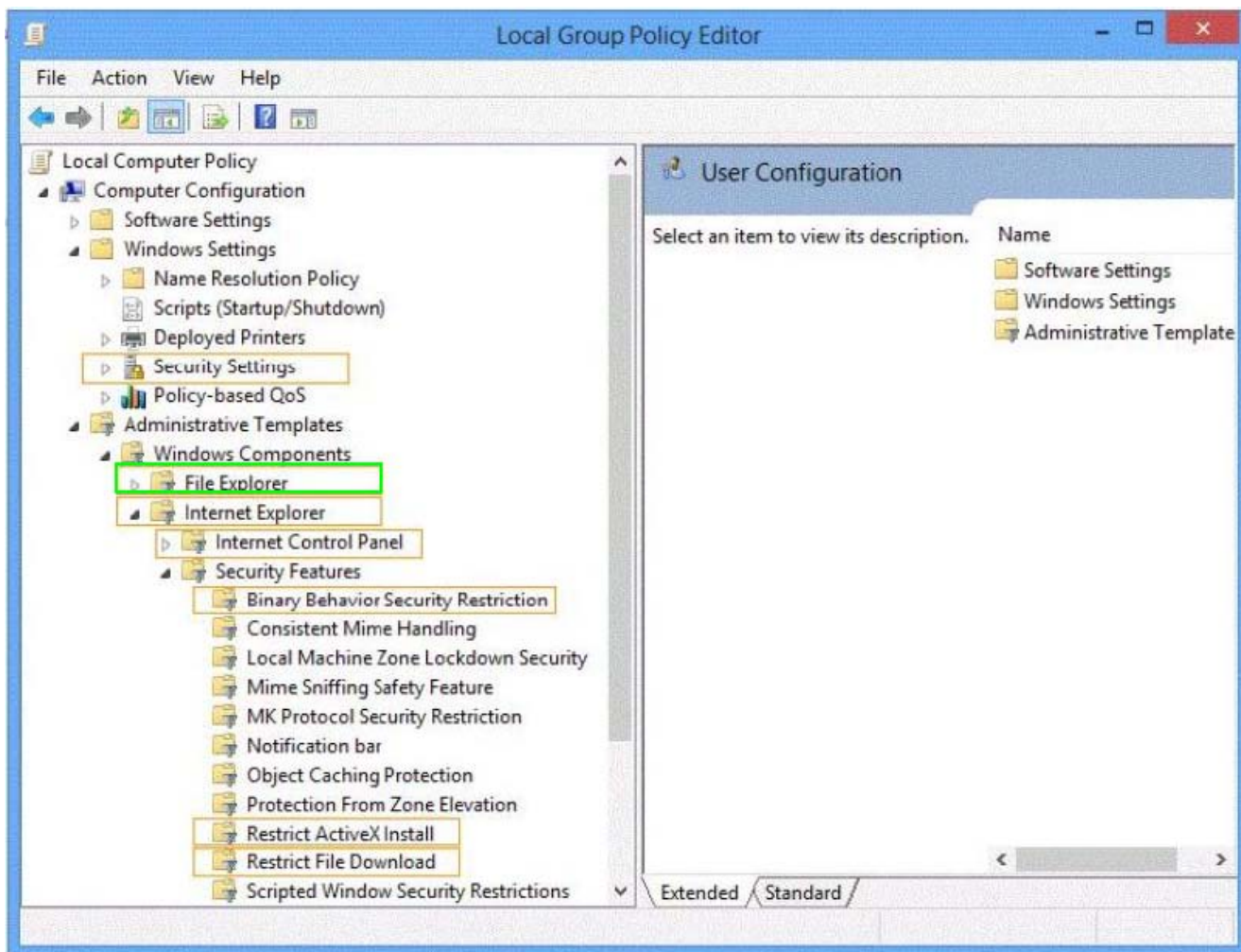
You support desktop computers that run Windows 8 Enterprise. One computer is a member of a workgroup and is used as a guest computer in a reception area.

You need to configure the SmartScreen setting to require administrator approval before running downloaded unknown software on the desktop computer.

Which policy setting should you use? (To answer, select the appropriate object in the answer area.)



**Answer:**



NO.8 You have Windows 8.1 Enterprise tablet computers.

On a computer named Computed, you have a Wi-Fi connection named Access1.

When you connect to Access1 you discover the following behaviors:

New device software is not installed automatically.

- Video streamed from the Internet is in low resolution by default.
- Only critical updates are downloaded automatically in the background.
- Many Windows Store apps do not perform background network activities.
- When you connect to your company's LAN, you do not experience the same behaviors.

You need to ensure that when you connect to Access1, you have the same user experience as when you connect to the LAN.

What should you do?

- A. Configure Access1 to not allow sharing.
- B. From the PC settings page, enable the Download over metered connections option.
- C. Configure Access1 as a non-metered connection.
- D. From the PC settings page, modify the Wireless devices settings.

**Answer:** B

NO.9 DRAG DROP

You support computers that run windows 8 Enterprise. AppLocker policies are deployed.

Company policy states that AppLocker must be disabled.

You need to disable AppLocker.

Which three actions should you perform in sequence? (To answer, move the appropriate actions from the list of actions to the answer area and arrange them in the correct order.)

Action	Answer Area
Delete all AppLocker rules.	
Disable the Application Identity service.	
Run the <b>gpupdate /force</b> command.	
Delete all Software Restriction Policy rules.	
Insert the Windows 8 Pro installation DVD into the optical drive of your computer. Run the <b>setup.exe</b> command with the /checkupgradeonly option.	
Install Windows Assessment and Deployment Kit (ADK).	

**Answer:**

Action	Answer Area
Delete all AppLocker rules.	Delete all AppLocker rules.
Disable the Application Identity service.	Disable the Application Identity service.
Run the <b>gpupdate /force</b> command.	Run the <b>gpupdate /force</b> command.
Delete all Software Restriction Policy rules.	
Insert the Windows 8 Pro installation DVD into the optical drive of your computer. Run the <b>setup.exe</b> command with the /checkupgradeonly option.	
Install Windows Assessment and Deployment Kit (ADK).	

NO.10 You support desktop computers and tablets that run Windows 8 Enterprise. All of the computers are able to connect to your company network from the Internet by using DirectAccess.

Your company wants to deploy a new application to the tablets.

The deployment solution must meet the following requirements:

- The application is not accessible if a user is working offline.
- The application is isolated from other applications.
- The application uses the least amount of disk space.

You need to deploy the new application to the tablets.

What should you do?

- Deploy the application as an Application Virtualization (App-V) package. Install the App-V 4.6 client on the tablets.
- Deploy the application as a published application on the Remote Desktop server. Create a Remote Desktop connection on the tablets.
- Install the application on a local drive on the tablets.

- D. Install the application in a Windows To Go workspace.
- E. Install Hyper-V on tablets. Install the application on a virtual machine.
- F. Publish the application to Windows Store.
- G. Install the application within a separate Windows 8 installation in a virtual hard disk (VHD) file. Configure the tablets with dual boot.
- H. Install the application within a separate Windows 8 installation in a VHDX file. Configure the tablets with dual boot.

**Answer: A**

#### NO.11 HOTSPOT

Your company has five hardware builds for client computers. The hardware builds are configured as shown in the following table.

Hardware build name	USB port	Processor	Memory	Firmware
Hardware 1	USB 3.0	32-bit	1 GB	BIOS
Hardware 2	USB 3.0	64-bit	2 GB	BIOS
Hardware 3	USB 3.0	64-bit	4 GB	UEFI
Hardware 4	USB 2.0	32-bit	4 GB	UEFI
Hardware 5	USB 2.0	64-bit	2 GB	UEFI

You plan to provide some users with Windows To Go disks that contain a corporate image of the 64-bit version of Windows 8 Enterprise and several line-of-business (LOB) applications.

In the table below, identify whether the hardware build is compatible or incompatible with the Windows To Go disks. Make only one selection in each row. Each correct selection is worth one point

Computer build	Compatible	Incompatible
Hardware1	<input type="radio"/>	<input type="radio"/>
Hardware2	<input type="radio"/>	<input type="radio"/>
Hardware3	<input type="radio"/>	<input type="radio"/>
Hardware4	<input type="radio"/>	<input type="radio"/>
Hardware5	<input type="radio"/>	<input type="radio"/>

**Answer:**

Computer build	Compatible	Incompatible
Hardware1	<input type="radio"/>	<input type="checkbox"/>
Hardware2	<input checked="" type="checkbox"/>	
Hardware3	<input checked="" type="checkbox"/>	
Hardware4	<input type="radio"/>	<input type="checkbox"/>
Hardware5	<input checked="" type="checkbox"/>	

NO.12 You administer a company network that includes computers that run Windows 8 Enterprise in an Active Directory domain. The company has purchased a subscription to Windows Intune. Corporate security policy requires that computers in the accounting department have file and program activity logged. A user in the accounting department uses a computer that is managed by Windows Intune.

You need to ensure that file and program activity is always monitored on this computer.

What should you do?

- A. Create a new Windows Firewall Setting policy in the Windows Intune Admin Console.
- B. In the Windows Intune Admin Console, create a new Windows Intune Agent Settings policy that uses the recommended settings.
- C. Create a new Windows Intune Mobile Security policy in the Windows Intune Admin Console.
- D. Create and deploy a custom policy in the Windows Intune Center Settings template.

**Answer:** B

NO.13 You are a systems administrator of a small branch office. Computers in the office are joined to a Windows 8 HomeGroup. The HomeGroup includes one shared printer and several shared folders. You join a new computer to the HomeGroup and try to access the HomeGroup shared folders. You discover that the shared folders are unavailable, and you receive an error message that indicates the password is incorrect.

You need to reconfigure the new computer in order to access the HomeGroup resources.

What should you do?

- A. Adjust the time settings on the new computer to match the time settings of the HomeGroup computers.
- B. Reset your account password to match the HomeGroup password.
- C. Disjoin all HomeGroup members and re-create the HomeGroup.
- D. Change NTFS security permission on the shared folders. Grant Everyone account Read & Execute permission.

**Answer:** A

NO.14 You administer client computers that run Windows 8.1 Enterprise deployed by using Windows

Deployment Services (WDS). Your company recently purchased 25 new tablets that run Windows 8.1 Pro.

For all 25 new tablets, you want to replace the existing Windows 8.1 Pro installation with Windows 8.1 Enterprise.

You need to deploy the Windows 8.1 Enterprise image to all 25 tablets simultaneously by using the existing WDS infrastructure.

What should you do?

- A. Start the tablets in Windows Recovery mode.
- B. Start the tablets by using a network boot option.
- C. Start the tablets normally. Deploy the Windows Image (WIM) file located on a WDS network share.
- D. Start the tablets normally. Map the Windows Image (WIM) file from a WDS network share.

**Answer:** B

NO.15 You administer Windows 8.1 Enterprise laptops that are members of an Active Directory Domain Services (AD DS) domain.

You want to be able to assist users remotely from the computer at the help desk.

You need to enable the help desk computer to connect to users' laptops while the users are logged in.

Which feature should you use?

- A. DirectAccess
- B. Remote Assistance
- C. Windows Remote Management (WinRM)
- D. Remote Desktop

**Answer:** B

NO.16 You administer computers that run Windows 8 Enterprise in an Active Directory domain. Your company has purchased a subscription to Windows Intune.

Users access a Microsoft Exchange environment by using the Mail tile. The Microsoft Exchange environment is connected to Windows Intune. Company security policy defines the minimum length of passwords and required encryption settings.

You need to create a Windows Intune policy that meets the security policy requirements.

What should you do?

- A. Create a new Windows Intune Center Settings policy.
- B. Create a new Windows Intune Agent Settings policy.
- C. Create a new Windows Intune Mobile Security policy.
- D. Create a new Windows Firewall Settings policy.

**Answer:** C